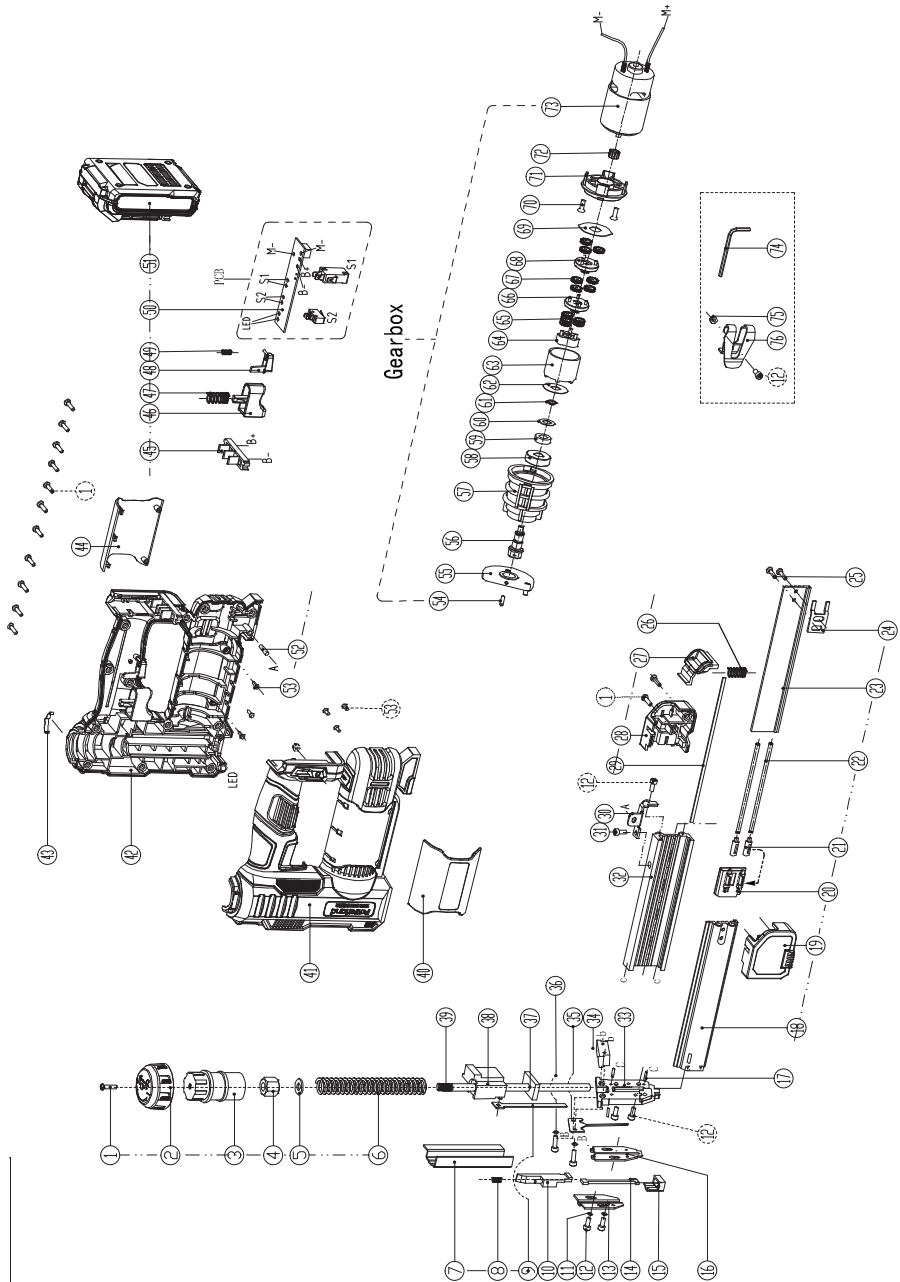


Exploded View RDP-YST20



Spare Parts

NO.	Description	Materials	Quantity
1	Cross recessed pan head tapping screws	ST3.5X14	15
2	outer knob	PA6-GF30	1
3	inner knob	PA6-GF30	1
4	Adjusting nut	45	1
5	Spring washer	65Mn	1
6	shock spring	piano wire	1
7	guide	65Mn	1
8	Trigger arm return spring	65Mn	1
9	firing pin	SK5-HRC 52-58	1
10	plastic trigger arm	PA6-GF30	1
11	Spring washer 4		4
12	Hexagon socket head screws	M4X12	6
13	The front cover	50	1
14	trigger piece		1
15	Trigger sheath	TPU	1
16	Striker limit plate	65Mn	1
17	Cylindrical pin	φ2.5X12-hardness 550-650HV	3
18	Internal nail groove	Aluminum profile	1
19	Plastic handle-left	PA6-GF30	1
20	nail pusher	50	1
21	compression spring seat	PA6-GF30	2
22	Nail clip compression spring	65Mn	2
23	Internal nail groove liner	Aluminum profile	1
24	Internal nail groove gasket	20	1
25	Cross recessed countersunk head self-tapping screws	ST3.5X16	2
26	Battery pack button spring	65Mn	1
27	battery pack button	PA6-GF30	1
28	Plastic handle-right	PA6-GF30	1
29	Nail groove protection strip	45	1
30	External nail groove fixing bracket	Q235	1
31	Hexagon socket head screws	M4X6	1
32	External nail groove	Aluminum profile-with protective strip installation slot	1
33	Split muzzle	SMF5040. Molding density: ≥7.0g/cm ³ , heat treatment hardness HRC36-42	1
34	muzzle holder	SMF5040. Molding density: ≥7.0g/cm ³ , heat treatment hardness HRC36-42	1
35	Striker pressure plate	50	1
36	Hexagon socket head screws	M4X18	2
37	Cushion pad	TPU	1
38	hammer head	SMF5040 chromium-molybdenum steel. Forming density: ≥7.2g/cm ³ ; heat treatment hardness HRC38-45;	1
39	spring shaft	40Cr	1

40	Left decorative cover	PA6-GF30	1
41	Left housing	PA6-GF30	1
42	Left housing rubber coating	TPE	1
43	Right housing	PA6-GF30	1
44	Right housing rubber coating	TPE	1
45	Tuning fork (sounding piece)	65Mn	1
46	Right decorative cover	PA6-GF30	1
47	switch trigger	PA6-GF30	1
48	trigger spring	65Mn	1
49	LED button	PA6-GF30	1
50	LED button spring	65Mn	1
51	control panel		1
52	Cylindrical pin ϕ 4X18	Steel hardness 210-280HV	1
53	Cross recessed pan head tapping screws	ST2.9*6	6
54	Elastic cylindrical pin	2.5X12mm	1
55	flywheel	SMF5030. Molding density: $\geq 7.2\text{g/cm}^3$	1
56	flywheel shaft	40Cr-heat treatment HRC42-45	1
57	Gearbox	PA6-GF30	1
58	Deep groove ball bearing	6000ZZ	1
59	Oil-containing bushing	FZ1165	1
60	Output shaft spacer	$\phi 9.5 \times \phi 17$	1
61	Retaining ring for shaft—Type B	Shaft diameter 9	1
62	Axle frame gasket (gear box gasket)	65Mn	1
63	Ring gear	SMF4030. Molding density: $\geq 6.6\text{g/cm}^3$, HRC30-45-immersed in anti-rust oil	1
64	Axle frame	65Mn	1
65	Third level planetary gear	SMF4030. Molding density: $\geq 6.8\text{g/cm}^3$, HRC33-43-immersed in anti-rust oil	3
66	Secondary planet carrier	Main body SMF4030. Molding density: $\geq 6.8\text{g/cm}^3$, HRC30-40-immersed in anti-rust oil	1
67	First and second level planet wheels	SMF4030. Molding density: $\geq 6.8\text{g/cm}^3$, HRC33-43-immersed in anti-rust oil	7
68	First stage planet carrier	Main body SMF4030. Molding density: $\geq 6.8\text{g/cm}^3$, HRC30-40-immersed in anti-rust oil	1
69	Gear pressure plate	65Mn	1
70	Cross recessed countersunk head screws	M4X12	2
71	Gear box cover	PA6-GF30	1
72	Motor gear	SMF5040. Molding density: $\geq 7.0\text{g/cm}^3$, heat treatment hardness HRC36-42	1
73	775 motor		1
74	Hexagonal wrench (GB-T 5356-2008) HRC52	S3	1
75	Non-metal insert hexagonal locking thin nut	The thread specification is M4, the performance level is 04, and the surface is galvanized.	1
76	hook up	Q235	1